

**GARY TOMPKINS  
COUNTY COMMISSIONER  
7TH DISTRICT**



**Proudly serving:**

- |                |                  |
|----------------|------------------|
| Lee Twp        | Clarence Twp     |
| Sheridan Twp   | Albion Twp       |
| Homer Twp      | Clarendon Twp    |
| City of Albion | Village of Homer |

# YOUR COUNTY CONNECTION

Monthly Newsletter

ISSUE 30 PAGE 1

JUNE 2019

## COUNTY ACTIONS/DISCUSSION

### June 6 Meeting

- 1.) Approved a Michigan Dept. of Health & Human Services local opioid response funding in the amount of \$41,000 for efforts to reduce opioid use and number of opioid deaths.
- 2.) Approved the submission of the engineering reimbursement from the State of Michigan in the amount of \$10,000 per ACT 51 for employing licensed engineers.
- 3.) Approved the signed local road agreements for 2019 which include 1 with Clarence Township (M Dr. N from 24 to 26 mile road skip pave) and 2 with Sheridan Township ( 24 Mile Rd between J & L Dr N– crush back to gravel, shared with Marengo & C Dr N between 28 1/2 & 29 Mile Road HMA 1.5)
- 4.) Approved claims payable for May 10 thru May 30, 2019 in the amount of \$13,496,930.61.

### June 20 Meeting

- 1.) Calhoun County Medical Examiner, Dr. Joyce deJong, was on hand to present the 2018 Medical Examiner Report. Dr. deJong noted that Calhoun County's opioid related deaths increased slightly from the previous year and 92% of all drug related deaths in Calhoun County are opioid related. When compared to Counties of equal population, Calhoun County continues to reflect a significant problem with opioid abuse.
- 2.) I had the high honor of reading into the record a proclamation recognizing the Homer High School Baseball Trojans as Div. 3 State Champions and making June 21, 2019 as Homer High School Baseball MHSAA Div. 3 State Champions Day in Calhoun County.
- 3.) Approved an agreement with Revize to provide website design and development for an enhanced Calhoun County website. The current website is outdated and not user friendly. The contract, not to exceed \$100,000, is included in the 2019 capital improvement plan. Initial estimates from the contractor puts the total cost around \$82,000.

## MONTHLY MEETINGS:

**(JULY)**



Albion City Homer Village	7/1	7pm
Senior Day in the 7th	7/2	9am-3pm
Clarence Twp Albion Twp Clarendon Twp	7/8	7pm 7:30pm
Homer VFW Aux. AH Substance Abuse Homer Twp	7/9	7pm 9am 7pm
Trailway Alliance Lee Twp	7/10	8am 7pm
Albion City	7/15	7pm
Sheridan Twp	7/16	7 pm
County Commissioners mtg	7/18	7pm
County Planning Comm.	7/22	4pm
Forks Senor Center Board Mtg.	7/24	1pm

PHONE: 517-607-5202

EMAIL: TOMPKINSCC7@GMAIL.COM



Like my Facebook page @ Facebook.com/garytompkinscc7



If you would like to receive the monthly newsletter in the comfort of your home/office or on your phone, please e-mail me @ tompkinscc7@gmail.com

**GARY TOMPKINS  
COUNTY COMMISSIONER  
7TH DISTRICT**



**Proudly serving:**

Lee Twp	Clarence Twp
Sheridan Twp	Albion Twp
Homer Twp	Clarendon Twp
City of Albion	Village of Homer

# YOUR COUNTY CONNECTION

Monthly Newsletter

ISSUE 30 PAGE 2

JUNE 2019

## ROAD UPDATES

1.) Township Supervisors meeting in conjunction with the County Road Dept. on June 10. Items discussed were the 2019 primary road projects, local 509 road share policy & the recently tabled road failure policy. John Midgley, Managing Director, indicated that a revision to the local 509 road share policy will be released in the fall with an expected start date of 2020 and could include a 1 mil 50/50 share provision. Twp. Supv. Discussed their disapproval of the failure policy as the 3 month timeframe is unacceptable and the townships should have the final say in which roads are to be turned back to gravel.

## OTHER HAPPENINGS

1.) Senior Day in the 7th on June 4. It was a great opportunity to meet and listen to senior issues and concerns. Made stops by Fun & Fitness at the Presbyterian Church in Homer, Clarence Township Congregate meal site & Forks Senior Center in Albion.

2.) SMART mtg. On June 5 at host Branch County. The meeting is a quarterly and involves commissioners in 14 counties in S.W. Michigan who share information, discuss topics facing counties and legislative updates. We toured the Burnside Senior Center and the new Consumers Energy Service Center.

3.) Attended the 13th Annual Calhoun County Legislative Breakfast at the Kool Family Center in Battle Creek on June 7. Elected leaders and community/business leaders in attendance discussed the future in Calhoun County including job training and business development.

4.) Attended the Juneteenth celebration at Washington Gardner in Albion on June 15. I had the honor of presenting a county proclamation and had the utmost honor of meeting Ms. Carrie Anderson who is the creator of the Juneteenth celebration in Albion.

5.) Attended the Calhoun County Community Health Needs Priority meeting at the Kool Family Center in Battle Creek on June 21. Results of the assessment and prioritization of issues can be found on page 6 of the newsletter.

6.) Calhoun County Michigan Township Association meeting on June 26. Reps. From Michigan Farm Bureau were on hand to discuss weather related crop/insurance/feed issues and water quality. Additionally discussed roads and the inadequacy of ACT 51.



June 16- Fathers Day Chicken Dinner  
(Lee Township)



June 29 - Ismon House Celebration  
(Albion)

## 7th District in Focus



June 8 - Father/son picnic & Cereal fest  
(Albion & Battle Creek)



June 15 - Juneteenth Celebration



June 22 - Health & Safety Expo  
(Albion)



June 23 - Flag Day Celebration  
(Albion Elks)

PHONE: 517-607-5202

EMAIL: TOMPKINSCC7@GMAIL.COM

If you would like to receive the monthly newsletter in the comfort of your home/office or on your phone, please e-mail me @ [tompkinscc7@gmail.com](mailto:tompkinscc7@gmail.com)

**GARY TOMPKINS  
COUNTY COMMISSIONER  
7TH DISTRICT**



**Proudly serving:**

Lee Twp	Clarence Twp
Sheridan Twp	Albion Twp
Homer Twp	Clarendon Twp
City of Albion	Village of Homer

# YOUR COUNTY CONNECTION

Monthly Newsletter

ISSUE 30 PAGE 3

JUNE 2019

## COMMITTEE CORNER



## COMMITTEES/ORGANIZATIONS SERVING:

### 1.) Senior Millage met May 31. (June mtg.) Items discussed/actions taken included:

- A.) Approved Yvonne Chapman to fill the open seat that was held by Willy Kalnins who resigned on May 5.
- B.) Karla Fales, CEO of Carewell Services Southwest, was on hand to present the annual implementation plan.
- C.) Approved moving the July 12<sup>th</sup> meeting to June 28<sup>th</sup>.
- D.) Approved mini-grant request from Aequitas Mobility Services to subsidize senior fares in the amount of \$5k.
- E.) Approved a mini-grant request from Marshall House for exercise equipment in the amount of \$5k.

- *Senior Millage Allocation Committee (SMAC) - Chair*
- *Calhoun County Planning Commission*
- *Calhoun County Trail way Alliance*
- *Homer Lake Mgmt. Board -Chair, Secretary & Admin.*
- *Southwest Michigan Behavioral Health (SWBH) Substance Abuse SUD Oversight Policy Board*
- *Potawatomi Resource Conservation & Development Council*
- *Forks Senior Center Board - Policy Chair*
- *Homer Downtown Development Authority*
- *Albion/Homer Substance Abuse Prevention Coalition*
- *Albion/Homer United Way*
- *VFW Auxiliary Post 9411-Homer*
- *County Board of Commissioners Parliamentarian*
- *SLF/Blair Scholarship Review Committee*
- *Homer Athletic Hall of Fame Committee President*

### 3.) Trailway Alliance met June 12. Items discussed/actions taken included;

- A.) Discussed the F Drive/11 Mile Road Project. The discussion centered around how to get across I-94 by either bridge over I-94 & boardwalk. The bridge would cost \$3 million with an alternative costing much less. Further discussion will continue to determine the best route.
- B.) Discussed the upcoming 1st annual trail run that will take place on Sept. 28th and will feature a 8k & 20k run. Registration for the event opened June 15th.

### 3.) County Planning Commission met June 24. Items discussed/actions taken included;

- A.) Meeting cancelled due to lack of agenda items.

PHONE: 517-607-5202

EMAIL: TOMPKINSCC7@GMAIL.COM



Like my Facebook page @ [Facebook.com/garytompkinscc7](https://www.facebook.com/garytompkinscc7)



If you would like to receive the monthly newsletter in the comfort of your home/office or on your phone, please e-mail me @ [tompkinscc7@gmail.com](mailto:tompkinscc7@gmail.com)

**GARY TOMPKINS**  
**COUNTY COMMISSIONER**  
**7TH DISTRICT**



**Proudly serving:**

Lee Twp                      Clarence Twp  
 Sheridan Twp              Albion Twp  
 Homer Twp                  Clarendon Twp  
 City of Albion              Village of Homer

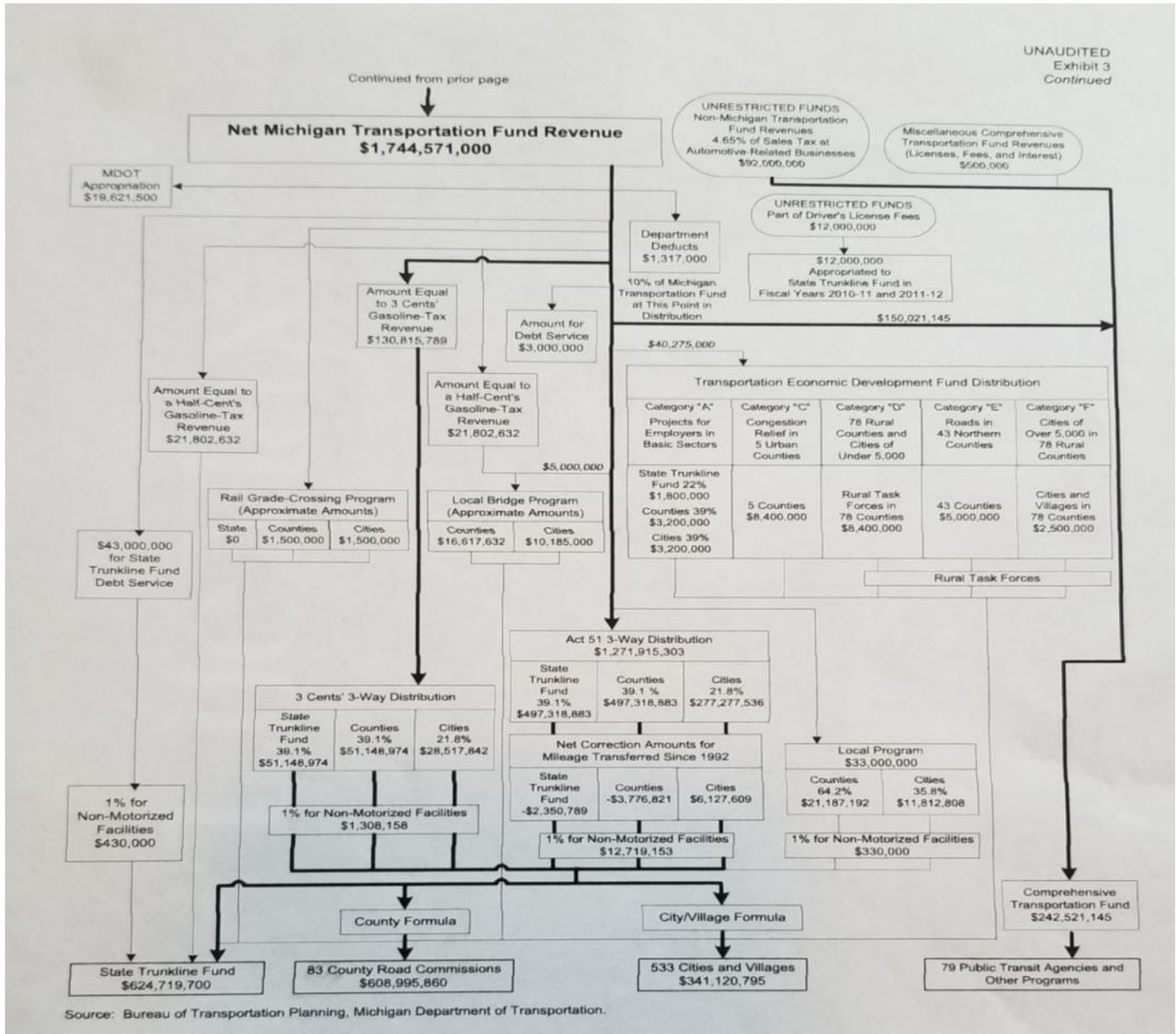
# YOUR COUNTY CONNECTION

Monthly Newsletter

ISSUE 30 PAGE 4

JUNE 2019

## ROAD FUNDING FACTS & WHY THE CURRENT SYSTEM WILL NEVER ADDRESS THE ISSUE PART 2: COMPLICATED FLOW CHART



**Too many twists and turns. The chart should be straight forward, simple and money should flow directly to roads.**

PHONE: 517-607-5202

EMAIL: TOMPKINSCC7@GMAIL.COM

If you would like to receive the monthly newsletter in the comfort of your home/office or on your phone, please e-mail me @ tompkinscc7@gmail.com

**GARY TOMPKINS  
COUNTY COMMISSIONER  
7TH DISTRICT**



**Proudly serving:**

Lee Twp	Clarence Twp
Sheridan Twp	Albion Twp
Homer Twp	Clarendon Twp
City of Albion	Village of Homer

# YOUR COUNTY CONNECTION

Monthly Newsletter

ISSUE 30 PAGE 5

JUNE 2019

## ROAD FUNDING FACTS & WHY THE CURRENT SYSTEM WILL NEVER ADDRESS THE ISSUE PART 2 COMPLICATED FORMULAS FOR COUNTIES & CITIES/VILLAGES

Graphic 11: MTF Distribution to County Road Commissions

Criterion	Percentage of MTF Distribution	Factor
Primary Road Mileage	6.4%	\$2,164 per mile
Local Road Mileage	16.4%	\$2,374 per mile
Urban Road Mileage	9.9%	\$12,390 per mile for urban primary roads, \$2,065 per mile for urban local roads
Vehicle Registrations	47.9%	37¢ per dollar collected in the county
1/83rd Share to Each County for Primary Roads	9.6%	\$1,056,287 per county
Rural Population	8.8%	\$16.88 per person
Snow Removal	1%	Based on average winter maintenance costs and actual snowfall
<b>Total</b>	<b>100%</b>	<b>\$906,168,948 to counties</b>

Graphic 17: MTF Distribution to Cities and Villages  
Graphic 18: Population Factors

			Population From	To	Factor
<b>Major Streets</b>			1	2,000	1.0
Criterion	Amount	Factor	2,001	10,000	1.1
Population	\$43.96 per person	n/a	20,001	30,000	1.2
Major Street Mileage	\$12,660.75 per mile	See Graphic 18	30,001	40,000	1.3
			40,001	50,000	1.4
			50,001	60,000	1.5
Trunkline Mileage	2 x \$12,660.75 per mile	See Graphic 18	60,001	70,000	1.6
			70,001	80,000	1.7
			80,001	95,000	1.8
<b>Local Streets</b>			95,001	160,000	1.9
Population	\$14.65 per person	n/a	160,001	320,000	2.0
Local Street Mileage	\$3,335.25 per mile	n/a	Over 320,000		See below

*Note: For a population over 320,000, a factor of 2.1 is used plus an additional factor of 0.1 for every 160,000 of population over 320,000*

**The criteria gives advantage to some and makes others continue to suffer.  
EVERYONE should have an opportunity to succeed and get roads repaired.**

PHONE: 517-607-5202

EMAIL: TOMPKINSCC7@GMAIL.COM

If you would like to receive the monthly newsletter in the comfort of your home/office or on your phone, please e-mail me @ tompkinscc7@gmail.com

**GARY TOMPKINS  
COUNTY COMMISSIONER  
7TH DISTRICT**



**Proudly serving:**

- |                |                  |
|----------------|------------------|
| Lee Twp        | Clarence Twp     |
| Sheridan Twp   | Albion Twp       |
| Homer Twp      | Clarendon Twp    |
| City of Albion | Village of Homer |

# YOUR COUNTY CONNECTION

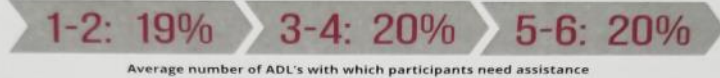
Monthly Newsletter

ISSUE 30 PAGE 6

JUNE 2019

## FACTS & FIGURES ON THE NEW SENIOR CARE PARTNERS P.A.C.E CENTER OPENING IN ALBION IN EARLY 2020

### NEED HELP WITH ACTIVITIES OF DAILY LIVING



TOTAL NUMBER OF MEALS SERVED IN FY 2018: 41,340  
AVERAGE NUMBER OF HOME CARE HOURS PROVIDED PER MONTH PER PARTICIPANT: 25

AVERAGE NUMBER OF PT/OT ENCOUNTERS PER MONTH: 3  
NUMBER OF TRANSPORTS IN FY 2018: 73,377

### THE PACE MODEL

PACE stands for "Program of All-inclusive Care for the Elderly."  
PACE is a long-term comprehensive health care program that enables medically-complex elderly adults to live at home in their communities for as long as medically and socially possible.

### THE PACE INTERDISCIPLINARY TEAM



### TOP 5 DIAGNOSES OF PACE PARTICIPANTS

PERCENTAGE OF PARTICIPANTS WITH DEMENTIA - 30%

- DIABETES
- HYPERTENSION
- CHRONIC OBSTRUCTIVE PULMONARY DISEASE (COPD)
- DEMENTIA
- CHRONIC KIDNEY DISEASE

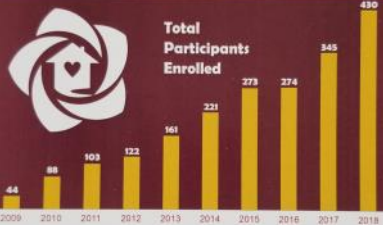
### SENIOR CARE PARTNERS P.A.C.E.

*brings community and wellness to older adults, enabling you to continue enjoying life through the independence of your own home. Our philosophy of care is holistic and all-inclusive - providing physical, mental/emotional and social services through our Day Health Center.*

### TOTAL PARTICIPANT ENCOUNTERS IN FY 2018 WITH:



### ENROLLMENT HISTORY



### SATISFACTION SURVEY



PERCENTAGE OF PARTICIPANTS WHO ARE DUALY ELIGIBLE FOR MEDICARE AND MEDICAID: 99%

PERCENTAGE OF PARTICIPANTS WHO PAY OUT OF POCKET: < 0.25%

PERCENTAGE OF PARTICIPANTS WHO ARE MEDICAID ONLY: < 0.50%

### PAGE SERVES OUR SENIORS



AVERAGE NUMBER OF ER VISITS PER MEMBER: LESS THAN 1 PER YEAR

AVERAGE NUMBER OF MONTHLY VISITS TO THE CENTER PER PARTICIPANT: 7

#### Physical Wellness

- Primary Medical Care
- Nursing
- Nutritional Counseling
- Fitness Classes
- Physical Therapy
- Medical Transportation
- Medical Specialists
- Surgical Specialists
- Dentistry
- Optometry
- Audiology
- Occupational Therapy
- Women's Services
- Rheumatology
- Cardiology
- Podiatry

#### Home Support Wellness

- Home Health Care
- Personal Care
- Homemaker
- Chore Services
- Home-Delivered Meals
- Transportation to and from Senior Care Partners P.A.C.E.

#### Social Wellness

- Art Classes
- Community Lounge
- Entertainment Room
- Gardening
- Themed Parties
- Woodworking
- Tai Chi
- Breakfast and Lunch Dining

#### Emotional Wellness

- Social Work
- Personal Care
- Group Activities
- Recreational Therapy
- Mental Health Services
- Spiritual Care

*Senior Care Partners P.A.C.E. also offers advanced medical services when needed: medication monitoring and distribution, lab tests and procedures, medical supplies and equipment, outpatient services, emergency care and ambulance services. We can also provide additional hospital care and nursing home care.*

PHONE: 517-607-5202

EMAIL: TOMPKINSCC7@GMAIL.COM

If you would like to receive the monthly newsletter in the comfort of your home/office or on your phone, please e-mail me @ tompkinscc7@gmail.com