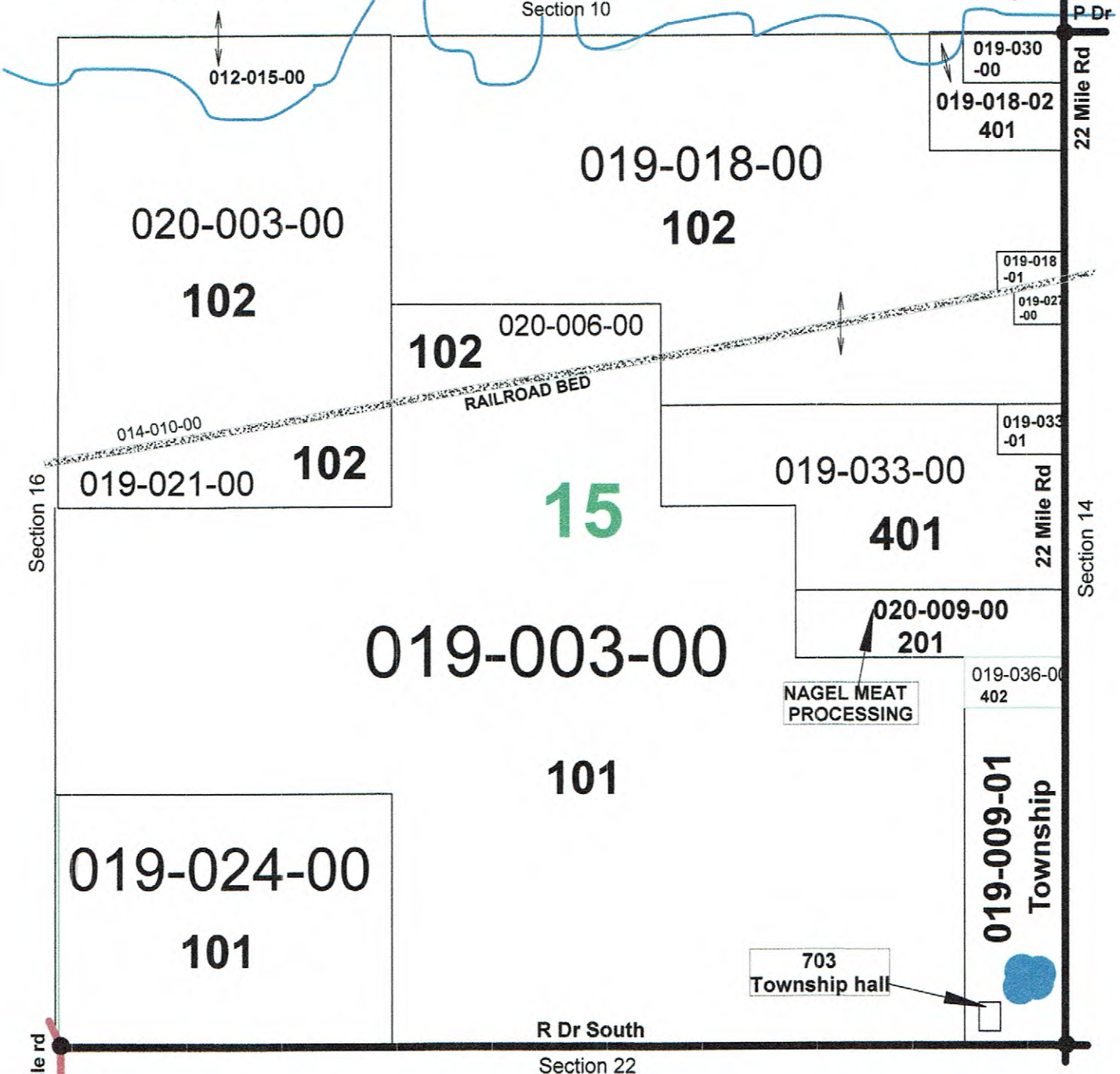


- State Highway
- Paved Road
- Gravel / Earth
- Township Boundary Line



- | | | |
|---------------------------|--------------------------|--|
| 101 Agricultural Improved | 301 Industrial Improved | 701 Exempt Federal |
| 102 Agricultural Vacant | 302 Industrial Vacant | 703 Exempt County, City, Township, Village |
| 201 Commercial Improved | 401 Residential Improved | Small parcels unless otherwise noted are class 401 |
| 202 Commercial Vacant | 402 Residential Vacant | |