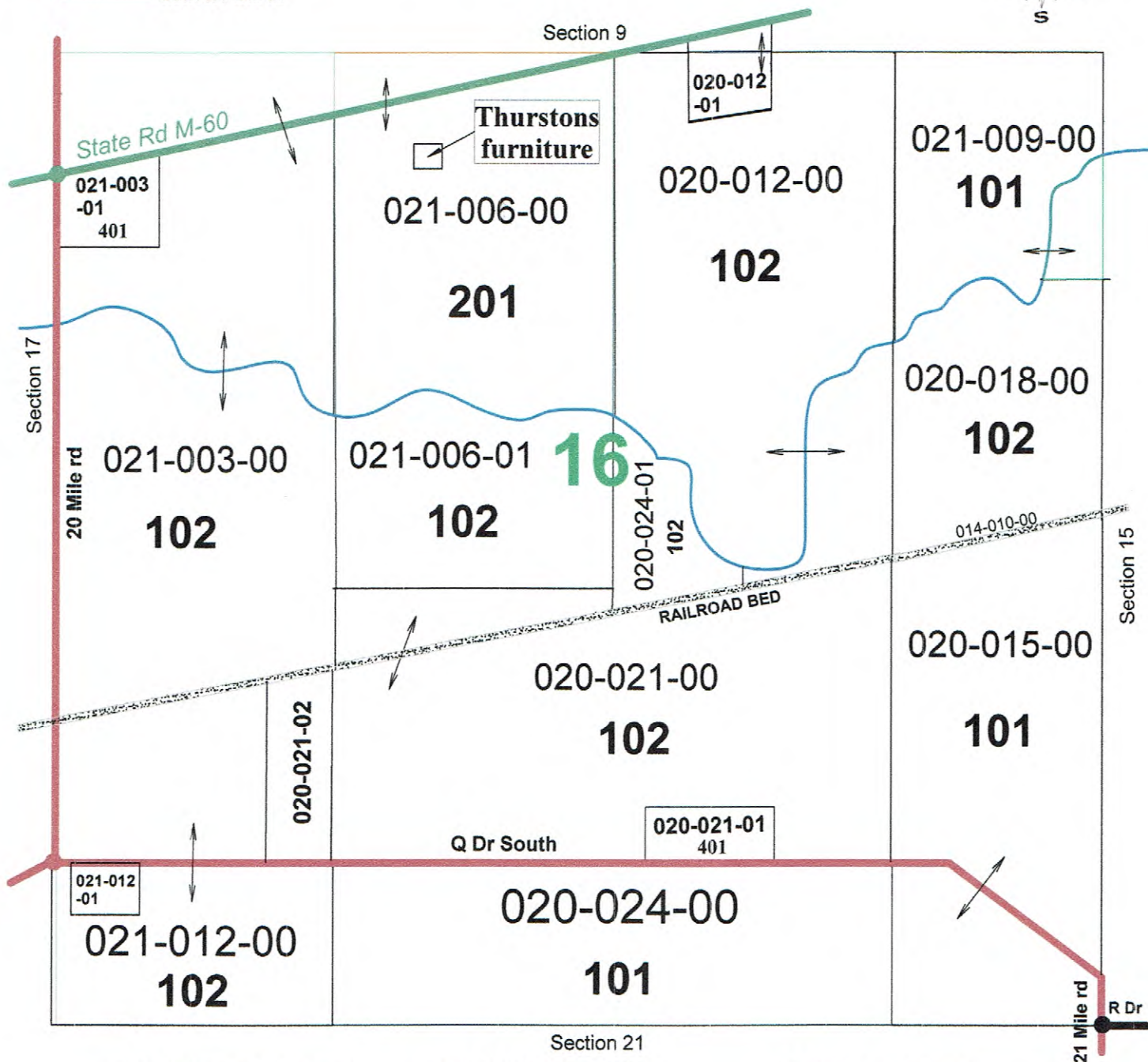


- State Highway
- Paved Road
- Gravel / Earth
- Township Boundary Line



101 Agricultural Improved
 102 Agricultural Vacant
 201 Commercial Improved
 202 Commercial Vacant

301 Industrial Improved
 302 Industrial Vacant
 401 Residential Improved
 402 Residential Vacant

701 Exempt Federal
 703 Exempt County, City,
 Township, Village
 Small parcels unless
 otherwise noted are class 401