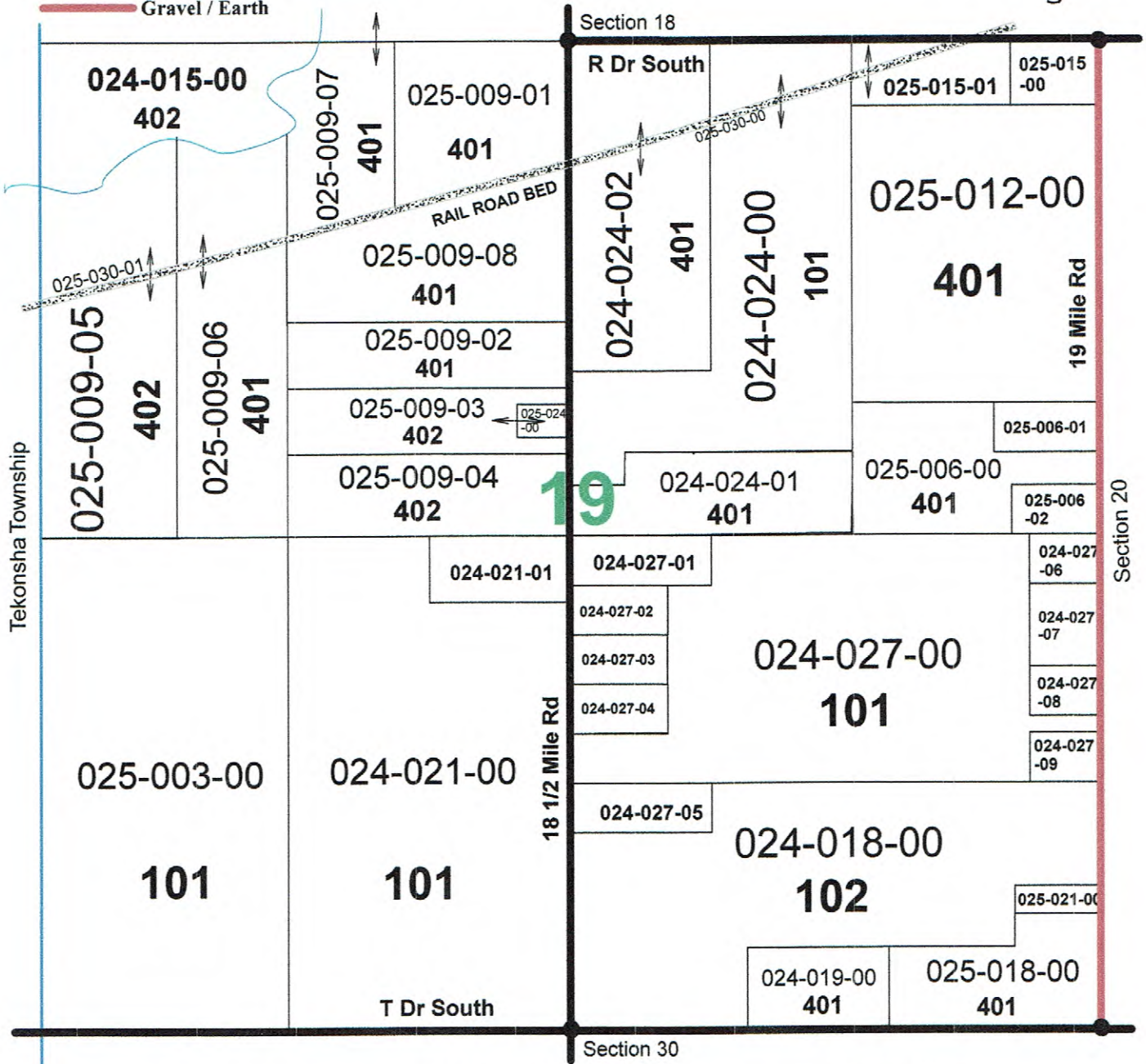


-  State Highway
-  Paved Road
-  Gravel / Earth

 Township Boundary Line



- 101 Agricultural Improved
- 102 Agricultural Vacant
- 201 Commercial Improved
- 202 Commercial Vacant

- 301 Industrial Improved
- 302 Industrial Vacant
- 401 Residential Improved
- 402 Residential Vacant

- 701 Exempt Federal
 - 703 Exempt County, City, Township, Village
- Small parcels unless otherwise noted are class 401