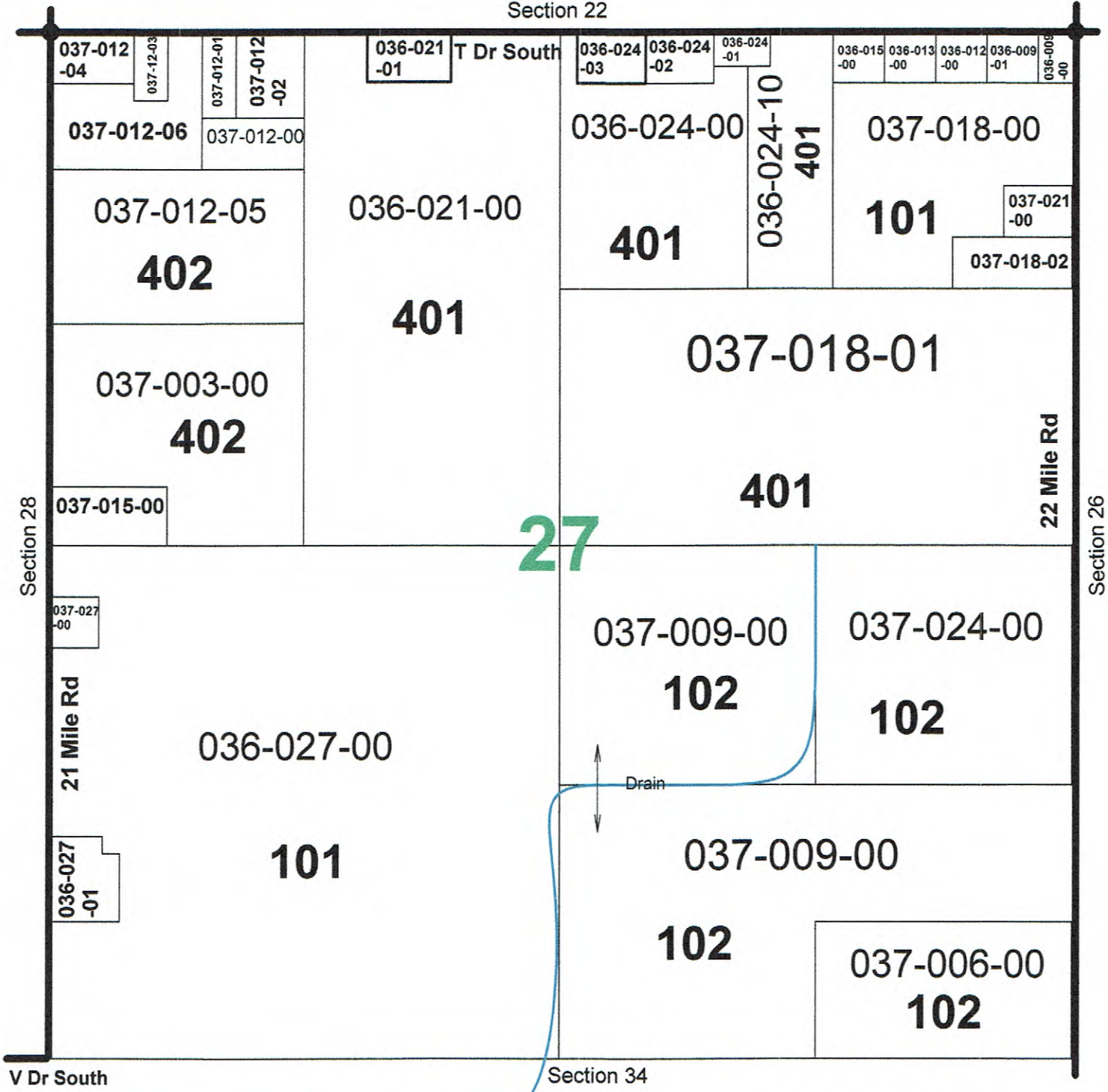


- State Highway
- Paved Road
- Gravel / Earth

— Township Boundary Line



Section 22



101 Agricultural Improved  
 102 Agricultural Vacant  
 201 Commercial Improved  
 202 Commercial Vacant

301 Industrial Improved  
 302 Industrial Vacant  
 401 Residential Improved  
 402 Residential Vacant

701 Exempt Federal  
 703 Exempt County, City,  
 Township, Village  
 Small parcels unless  
 otherwise noted are class 401